



# REGOMS PRODUCT DATASHEET

---

EMERGENCY HYDRAULIC QUICK DISCONNECT

## Emergency Hydraulic Quick Disconnect



**FOR ILLUSTRATION PURPOSE ONLY**

### DESIGN PRINCIPLE

The Control Panel Unit is designed to control the latch and unlatching operation of the Hydraulic Quick Disconnect. The Unit provides the hydraulic pressure to actuate the piston that latched and unlatched the Hydraulic Quick Disconnect as required in emergency situation.

### Features

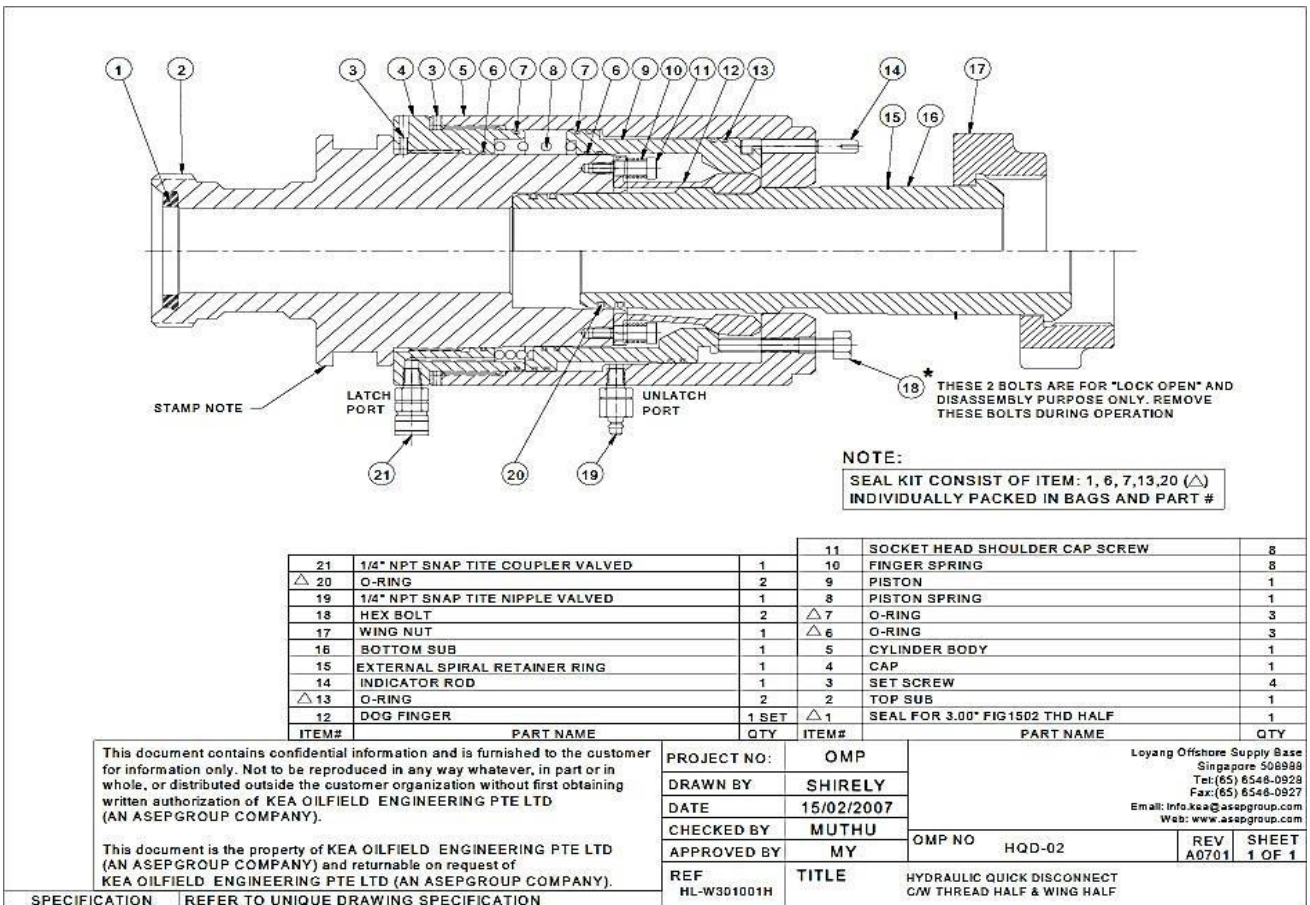
- Air driven liquid pump for oil injection (Haskel AW-60)
- Air regulator to control air input
- Air pressure gauge to monitor intake air pressure
- 4-gallon stainless steel tank
- 10K pressure gauges to monitor injection and return oil pressure
- Isolation valve to isolate the injection line from the pump
- Release valve to control the flow from the return line (optional)
- Accumulator with 4 liters x 3000 psi maximum pressure

Specification	Details
BOP Unit Details	
- Pressure rating	10,000 psi
- Pressure gauge	10,000 psi
- Connection	2" 1502 WECO
- Reservoir tank	4 gallon
- Air operating pressure	80-100 psig.
- Accumulator system	4 liters x 3,000 psi Max
- Main Disconnect system	Hydraulic driving with control lever.
- Auxiliary Disconnect system	2 x Pneumatic cylinders drive to support main system.
- Responding time	+/-1 to 2 seconds

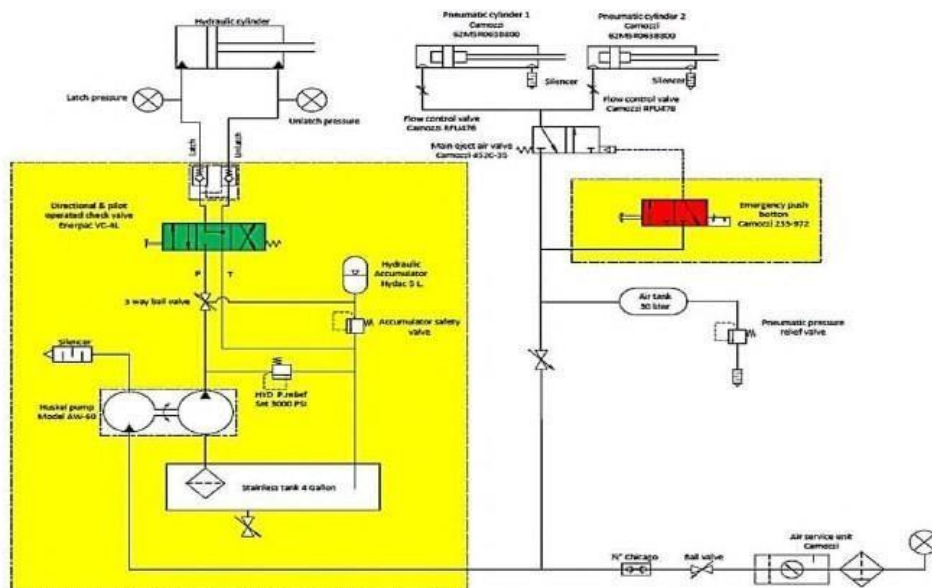


**FOR ILLUSTRATION PURPOSE ONLY**





## Schematic Drawing



To request for a quotation and detailed pricing, please contact our sales team:

**REGOMS Engineering (M) Sdn. Bhd.**

No. 10-1, Jalan 13/48A, The Boulevard

Shop Office Sentul Raya, Sentul

Selatan, 51000 KL. WP.

Malaysia

Tel: +603 2858 2600

Email: [sales1@regoms.com](mailto:sales1@regoms.com)

**REGOMS Australia Pty Ltd.**

Level 1, 16, McDougall Street,

PO Box 1279, MILTON QLD 4064

Australia

M: +614 0008 4977

F: +617 3198 2401

E: [sri@regoms.com](mailto:sri@regoms.com)

*Any modification of the content, duplication or reprinting of this datasheet, as well as any distribution to third parties - even in parts - shall require the express written approval of REGOMS.*