



REGOMS PRODUCT DATASHEET

HOSE HANGER

HOSE HANGER





Application

Hose Hanger is specific design to minimum hold up to 100 ft of hose filled with water, cement slurry, and others fluid with 5 Ton carry weight capability. The hanger is required to weld or non-weld for safety line with standard padeye or clamping system for safety reason. It's mobile equipment that can be able to spot anywhere else on offshore platform facilities or Drilling rig. The arm is designed to high enough across standard handrail with 1.1 meter. Hose safety clamps are installed in hose pocket to prevent any vibration and drop object.

Features and Benefit

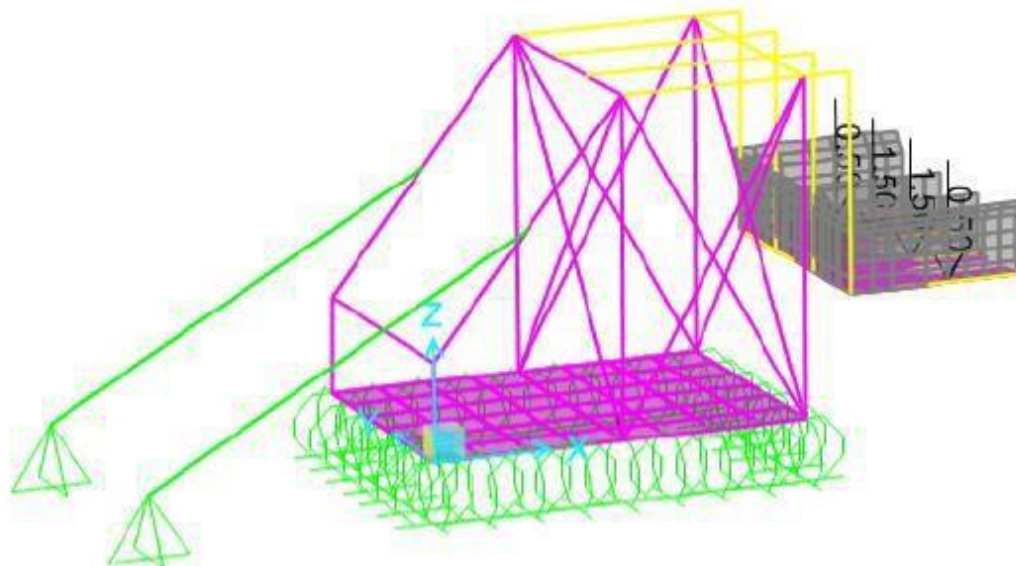
- Portable design
- MGW 6.4 Mt
- Max 5 Ton hose weight sustainable
- Safety line tie up on deck or skid beam
- Hose safety clamp to prevent DROPS
- 2",4" and 6" hose workable range
- Accomodate across standard handrail 1.1 meter
- Able to hook up with Flex hose or Iron Chicksan

Specification	Details
Dimension	
- Length	132 Cms
- Width	265 Cms
- Height	150 Cms
- Weight	6.4 Mt
Mud Gas Separator Unit Detail	
- Hose Service Range	2",3",4" and 6"
- Hose Service Slot	3 slots
- Restraining System	Double pad eye c/w Turn Buckle/ Clamping type

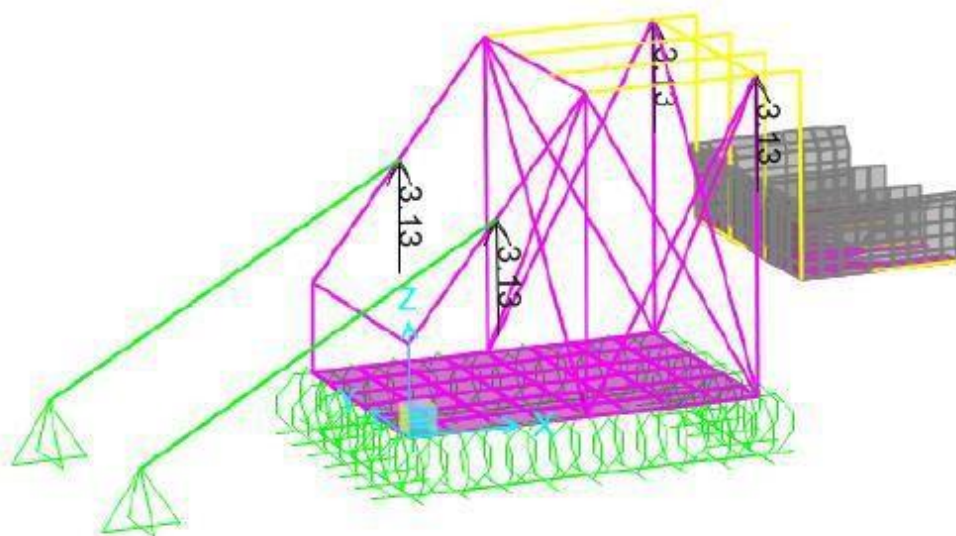
Pad Eye Type 2 for Safety Anchor



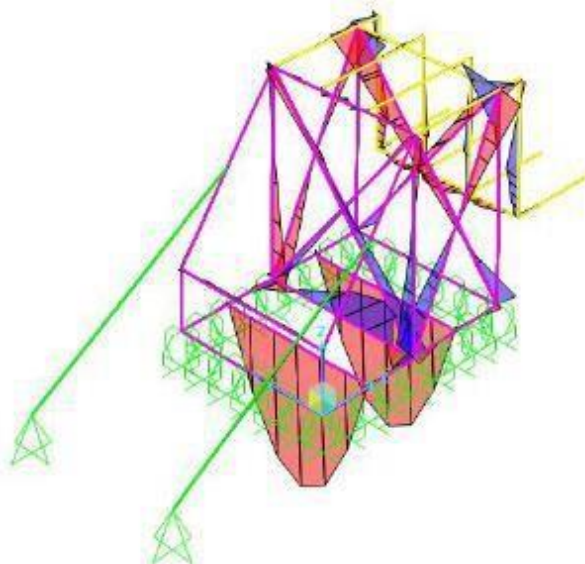
Pipe load = 1.5 t for middle location x 2
= 0.5 t for edge location x 2



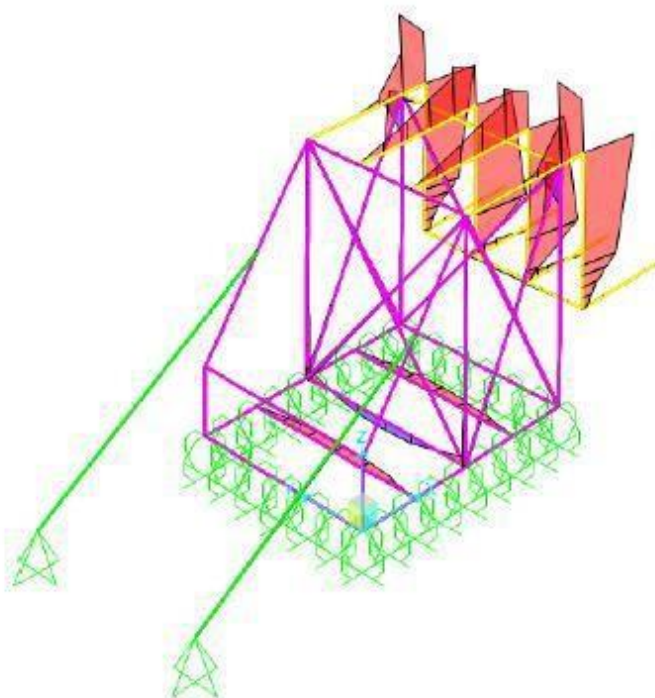
Test load = $2.5 \times 5 = 12.5 \text{ t} / 4 = 3.125 \text{ t/eye}$



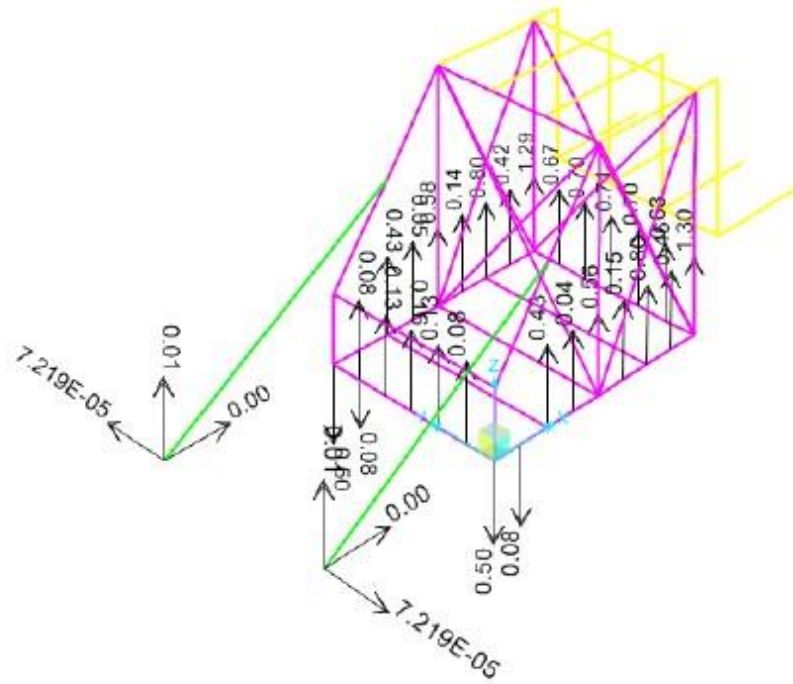
Structural analysis for operation & load test



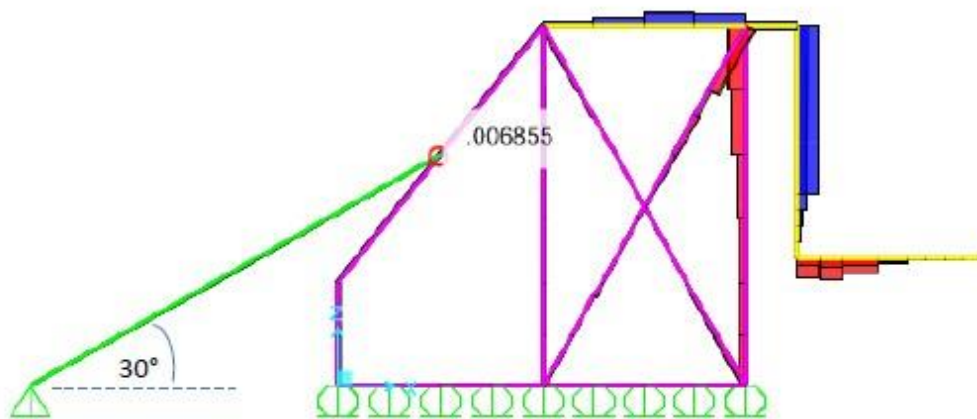
Maximum moment minor axis = 0.18 t-m



Maximum moment major axis = 0.8 t-m



Reaction force (Ton)



Sling tension force = 0.007 ton